

FRIENDSHIP

Vol. 11 (October 2018 - March 2019)

Neighbouring Countries Economic Development Cooperation Agency (Public Organization)



Dr. Pattama Teanravisitsagool

Deputy Secretary General, the National Economic and Social
Development Council (NESDC)



Dr. Pattama Teanravisitsagool

Deputy Secretary General, the National Economic and Social Development Council (NESDC)

Neighbouring Countries Economic Development Cooperation Agency (NEDA) and its development assistance role according to; Strategy 2: competitiveness enhancement of the 20-Year National Strategy (2018-2037); and Strategy 10 : international cooperation for development of the 12th National Economic and Social Development Plan (2018-2022).

Q1 : Please tell us more about concordance between the 12th National Economic and Social Development Plan (2018-2022) and the 20-Year National Strategy (2018-2037) and how the plans pave the way to development of Thailand.

The development under the 12th National Economic and Social Development Plan (2018-2022), which is a 5-year term action plan, is derived from the 20-Year National Strategy. The strategy can be considered as the core development master plan of the country which envisions the future and long-term goals of Thailand. It is necessary that the strategy is clearly understood by every relevant sector. So, the National Economic

and Social Development Plan is the key to propagate this long-term strategy into action plan. With appropriate prioritization, continuous action, and essential mechanisms in every level, long-term goals can finally be achieved.

The 12th National Economic and Social Development Plan clearly states the goals in economic, social, and environmental aspects which need to be fulfilled in 5 years. The plan also lays its legacy and continuity to the next 3 plans, until the time for the 15th National Economic and Social Development Plan (2033-2037), which will be the final stage of 20-Year National Strategy. It can be said that the 12th Plan covers all aspects and goals of 20-Year Strategy and the next National Economic and Social Development Plan will inherit the works from the 12th Plan.

There are 10 strategies which are very detailed in the 12th Plan. The strategies comprise of 6 strategies taken from the 20-Year National Strategy, and 4 strategies as supportive; 1) resilience enhancement, 2) just and inclusive development, 3) competitiveness building, 4) environmental friendly development, 5) building country's security, 6) good governance in public sector, 7) infrastructure and logistics development, 8) science and technology research and innovation, 9) spatial development, and 10) international cooperation for development. Apart from the 12th Plan, there are specific master plans for each matter that needs urgent boost, such as SMEs Development Plan, Reformation Plan, etc.

Q2 : How should NEDA exercise its strategy and budget management for the development project towards sustainability according to SDGs and Thailand 4.0 Policy? And what is your view towards NEDA's role as a development assistance provider and as a government's mechanism.

Economic development cooperation between Thailand and neighboring countries needs to comply with cooperation strategy that leads to development of Thailand and its neighboring countries in the modern world's dynamic contexts. Under the 12th Plan, international cooperation strategy aims to promote development of economy, society, and environment. Hence, the forms of cooperation come in trade, investment, social development, development partners towards sustainability, decreasing disparities, and enhancement of environmental and quality of life standards.

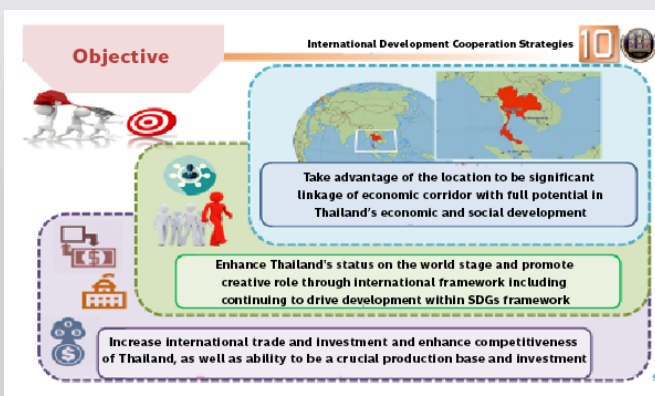
NEDA's role and mission are one of the government's mechanisms to promote such cooperation. Therefore, NEDA's assistance in infrastructure development is something to consider beyond economic aspect. Plus, the cooperation goals should envision sustainable development principles on economic development, social development, and sustainable environment. Speaking of SDGs of United Nations Agenda 2030, the goals aim at 5Ps development. This 5Ps consist of People, Prosperity, Peace, Planet, and Partnership. For Thailand, the 20-year strategy and the 12th plan's "Thailand 4.0" policy are also complied with SDGs. The plan defines Thailand's role in international level as active and creative roles. According to strategy 10 of the 12th plan, the main purposes are to enhance opportunity for trade, investment and manufacturing, promote Thailand's role in international level, and promote Thailand's creative roles in cooperation frameworks, including the role to promote eco-friendly development under SDGs.

So, it is expected that NEDA will firmly and effectively exercise its roles in promoting economic development cooperation in the sub-region. It is also certain that NEDA's development assistance has to take into account environmental and social impact assessment standard. In the future, to expand the boundary of seamless connectivity, NEDA should concern soft side development, for example, harmonization of rules and regulations, social development, etc. NEDA also has a potential to develop itself into an intelligent unit. With NEDA's information and close connection to neighboring countries, it can provide information and expertise to public and private sectors in Thailand to promote trade and investment. Such duty will contribute to the idea of "prosper thy neighbor" in the future.

Q3 : Regarding the Development of Two-lane Road Connecting Thailand-Myanmar Border at Phu Nam Ron to Dawei Special Economic Zone (SEZ) Project, what is your suggestion for the project as Deputy Secretary General of NESDC?

Thailand and Myanmar Governments agreed on MOU to develop Dawei Special Economic Zone (SEZ) in 2010 with the agenda to create and develop economic force in Myanmar and in ASEAN which will result in employment and high quality of life. The concept lays on connecting the east coast to the west coast which will pave the way to western gateway for Greater-Mekong Sub-regional countries, especially Myanmar Thailand, Vietnam, and Cambodia. The project will also be a regional logistics shortcut for ASEAN countries. The successful project will finally result in advancement of logistical connectivity along GMS Southern Economic Corridor. The project aims at; development of economic and mega-industrial zones to support Myanmar's industrial expansion; and connection of GMS's supply chain which has the strategic location at Eastern Economic Corridor (EEC) or Gateway to Asia.

The Development of Two-lane Road Connecting Thailand-Myanmar Border at Phu Nam Ron to Dawei Special Economic Zone (SEZ) Project is defined as the initial phase of DSEZ Development Master Plan. The project is physically important to Southern Transport and Logistic Corridor as it will help develop industry and service sector in the DSEZ and connected areas, both in Thailand and on Southern Economic Corridor of GMS. According to strategic view, connecting Thailand to DSEZ in Myanmar will also lead Thailand to BIMSTECS on the west coast, as BIMSTEC is one of Thailand's markets. Hence, it can be seen that Thailand invests a lot to completely fulfill GMS Southern Economic Corridor and generate economic activities. Some of the concrete projects are Bangyai-Kanchanaburi Special Highway Project, Road and Border Crossing Facilities Development in Cambodia, especially at Stungbot Border, and Poipet Rail and Station Development Project.



NEDA's financial and technical assistance towards Myanmar

The Republic of the Union of Myanmar (Myanmar) is one of the member countries of Greater Mekong Subregion Economic Cooperation (GMS-EC). The cooperation framework aims to promote members' economic growth and enhance competitiveness in international level through development assistance in infrastructure, public utilities, and relevant social capital. Especially, Yangon, Dawei, and Myawaddy are southern provinces which can be considered national and regional economic area. Their special geo-economics characteristics enriched with natural resources, geography, and demography make them suitable for development.

Regarding the importance of the three cities, Myanmar Government and the Neighbouring Countries Economic Development Cooperation Agency (Public Organization) (NEDA) mutually agreed that the cities need development in order to be trade and manufacturing hub. Hence, NEDA agreed to provide technical and financial assistance to Myanmar for three projects; 1. Technical Assistance for Two-lane Road Connecting Dawei Special Economic Zone (SEZ) to Thailand-Myanmar Border Project, 2. Financial Assistance for 3rd GMS Corridor Towns Development in Myawaddy (Water Supply and Waste Management) Project, and 3. Financial Assistance for Power System Development in Yangon City (North Okkalapa and North Dagon) Project. Those infrastructure development assistance aims to promote economic growth in the sub-region. To effectively achieve the projects, avoid unnecessary duplication, and comply with international standards and principals, NEDA integrates with relevant agencies of Thailand and Myanmar, namely Provincial Electricity Authority of Thailand, Yangon Electricity Supply Corporation, Ministry of Planning and Finance of Myanmar, and Asian Development Bank to work together.

Therefore, NEDA's technical and financial assistance towards Myanmar is the government's effective mechanism to promote economic growth, good relationship among people, border trade, and collective sustainable development.



NEDA's roles in ACMECS



Ayeyawady - Chao Phraya - Mekong Economic Cooperation Strategy (ACMECS) is the cooperation framework co-established by Cambodia, Lao PDR, Myanmar, Vietnam, and Thailand. Thailand, located in the middle among these countries, filled with development experience, therefore, led the establishment of ACMECS in 2003. The cooperation framework aims to narrow development gap among the members, especially for CLMV. Thailand then saw the opportunity to assist the development of neighboring countries according to "Prosper-thy-neighbor" Policy, the policy that focuses on development cooperation in order to enhance economic growth, sustain security, strengthen trust among one another, and promote Thailand's role as a regional development partner.

ACMECS is a framework with special geo-political characteristics of Asia-Pacific region, located between two main oceans; the Indian Ocean and the Pacific Ocean. In addition, its member countries share similar culture and are determined to cooperate as strategic partners for mutual benefit. Plus, with the economic growth rate at 6-7% per year, ACMECS can be one effective mechanism to drive ASEAN Community.

Currently, ACMECS is being driven under ACMECS Master Plan 2019-2023 which consists of three pillars;

1. Promoting sub-regional seamless connectivity by fulfilling transportation infrastructure missing links in the sub-region, especially, the connectivity along

East-West Economic Corridor (EWEC) and Southern Economic Corridor (SEC).

2. ACMECS' economic synchronization by harmonizing rules and regulations regarding trade, investment, industry, and finance. Such rules and regulations need to be reviewed for harmonization and un complication. Furthermore, fundraising innovation through ACMECS Fund is important as well.

3. Regional smart and sustainable development by aiming at area of interest of each member country, including human resource development, sustainable environment, and innovative technology.

NEDA, is a development partner with a mission to develop connectivity infrastructure for neighboring countries to promote trade, investment, and tourism between Thailand and neighboring countries. Particularly, NEDA's mission is in compliance with ACMECS Master Plan 2019-2023 pillar 1: sub-regional seamless connectivity. For example, in Lao PDR, NEDA is providing assistance for the 5th Thai-Lao Friendship Bridge Project, Development of National Road 12 Project, and Feasibility Study and Detailed Design for Chiangman-Luang Phrabang Bridge Project. In Myanmar, NEDA provides assistance for Two-lane Road Connecting Dawei Special Economic Zone (SEZ) to Thailand-Myanmar Border Project. And in Cambodia, NEDA is also assisting with Feasibility Study and Detailed Design for Improvement of National Road No.67 (Siemreap-Anlong Veng-Choam/Sa Ngam) and the Stung Bot Border Crossing Facilities and Connecting Road to Road No.5 Project.

As you can see from NEDA's roles, NEDA is one of crucial mechanisms to drive ACMECS Master Plan's pillar 1. Moreover, for the pillar 2: ACMECS' economic synchronization, NEDA has a potential to manage the ACMECS Fund that will be established as a fundraising tool. The Fund, initially 500 Million USD, plus additional members' and development partners' funding, will be for development projects under 3 pillars of the Master Plan.

So, NEDA is heading for a "Infrastructure Financing Mechanism" role of the Thai government and will promote development cooperation among ACMECS. This role will enhance Thailand's soft power in the region.

Source: Ministry of Foreign Affairs

The taste of local food in Phnom Penh

If you want to taste something good in Phnom Penh, count on us! We will take you to taste real national food or Khmer food. Normally, Khmer food gives you smoother taste than Thai food while the latter gives you more explicit taste. Main food comes in many types; rice, noodles, beverages, soup, snack, and fruits. In Cambodia, there are many types of rice; jasmine rice, sticky rice, etc. Normally, when they eat fruits, they have them sided with sticky rice.



"Amok" or Homok

steamed fish with curry in Thai, is one of the popular breakfasts. Ingredients are the combination of fresh-water fish, and spices. This dish costs around 8-10 USD with original taste guaranteed.

Recommended Restaurant : Romdeng Restaurant

Address : 74 Oknha Ket Street, (Street 174),
Phnom Penh, Cambodia

Tel : +855 70 519 565

Business Hours : 11.00 - 23.00 hrs.

**“Guai Diaw”
or Khmer noodle**

Another dish to start your day. This dish tastes like Pho, sided with beansprout. Ingredients are lettuce, black pepper, lemonade, and fried garlic. You can enjoy having this noodle and watch the traffic while the radio is playing National Anthem at 7 AM. True happiness in Phnom Penh.

Recommended Restaurant : David’s Restaurant -
Handmade Noodles

Address : 213, Street 13, Phnom Penh,
Phnom Penh, Cambodia

Tel : +855 12 351 890

Business Hours : 11.30 - 21.30 hrs.

“Banh Xeo” or sizzling pancake

Another popular dish for your selected time.

The dish is best served hot and crispy and sided with vegetables. It is made from rice flour topped with pork, squid, or shrimp, seasoned with turmeric powder before flying in a hot pan.

Recommended Restaurant :

We Cheers Restaurant & Bar

Address : 134 Street | 136, Sangkat Phsar
Kandal 2, Phnom Penh, Cambodia

Tel : +855 16 627 083

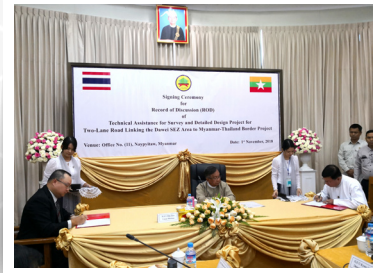
Business Hours : 09.00 - 22.00 hrs.





Mr. Kirati Veruwan, Vice President, led staff to a study visit and briefing session regarding electronic transactions, e-commerce, e-meeting, e-document, and related laws as crucial mechanisms for digital economy era at Electronic Transactions Development Agency (Public Organization) on 31 October 2018.

Mr. Perames Vudthitornetiraks, President of NEDA paid a courtesy call on H.E. U Han Zaw, Union Minister, Minister of Construction and introduce himself for taking up position. The two sides agreed to push forward the implementation of the projects especially on the Third GMS Corridor Town Development Project: Myawaddy (Water Supply and Solid Waste Management Project), The Power System Development in Yangon City Project (North Okkalapa and North Dagon Townships), and the Two-Lane Road Connecting Dawei SEZ to Myanmar-Thailand Border project. In this occasion, the President of NEDA and Deputy Director General U Ohn Lwin signed the Record of Discussion (ROD) for Technical Assistance for Survey and Detailed Design Project for Two-Lane Road Connecting Dawei SEZ to Myanmar-Thailand Border project on 1st November 2018, at Ministry of Planning and Finance, Nay Pyi Taw, Myanmar.



Col. Saranyu Viriyavejakul, D.Sc., Vice President, led NEDA's staff and executives to attend the Royal Kathin Ceremony 2018 of Ministry of Finance on November 9, 2018 at Yannawa Temple.

Col. Saranyu Viriyavejakul, D.Sc., Vice President of NEDA together with Mr. Taweessit Yooprasert, NEDA's Projects & Engineering Advisor and delegates attended the meeting with Mr. Nou Vaddhanak, Director General of Techniques and delegates in order to discuss on Inception Report for the Feasibility Study and Detailed Design on the Improvement of the National Road No. 67 (NR67) (Section of Siem Reap-Anlong Veng-Choam/Sa Ngam) Project, the presentation of Inception Report of the captioned project has been presented by the consultant on 20 November 2018 at Ministry of Public Works and Transport, Phnom Penh, The Kingdom of Cambodia.





Ms. Chularat Suteethorn, Chair of the Board of Directors, led NEDA's President and executives to join the opening ceremony of EXIM Bank in Lao PDR. The ceremony was presided over by H.E. Mr. Apisak Tantivorawong, Minister of Finance of Thailand and H.E. Mrs. Thippakone Chanthavongsa, Vice Minister of Finance of Lao PDR on November 30, 2018 in Lao PDR.

NEDA's Proactive Strategic Committee held meetings with Thailand's border provinces to define potential assistance projects towards Lao PDR, Cambodia, and Myanmar throughout November 2018.



Mr. Perames Vudthitornetiraks, President, led **NEDA's executives and staff** to join National Anti-Corruption Day under the theme "Zero Tolerance." The event was chaired by Prime Minister on December 7, 2018 at Impact Arena.

Mr. Perames Vudthitornetiraks, President, together with Mr. Kirati Veruwan, Vice President, led a mission to Lao PDR for the project monitoring on Hongsa - Chiangman Road Construction Project. NEDA also had a follow-up meeting with Ministry of Public Works and Transport, Lao PDR. The mission was conducted during December 11-14, 2018 in Lao PDR.



Col. Saranyu Viriyavejakul, D.Sc., Vice President, gave an opening remark for the knowledge sharing session towards Myanmar's related agencies. The session's purpose was to enhance knowledge and understanding on NEDA's technical and financial assistance procedures. There were more than 40 attendees from Ministry of Planning and Finance, Ministry of Construction, and Ministry of Environmental Conservation and Forestry. The session was held during December 17-18, 2018 in Nay Pyi Daw, Myanmar.



NEDA's Board of Directors, together with NEDA's president, executives, and staff held NEDA 2018 Annual Retreat and BoD's monthly meeting at Phetchaburi Province. On this occasion, NEDA's BoD and NEDA took the opportunity to arrange a study visit at the Royal-initiated Project, organization photo shoot under the theme "We Not Me", and team building activity "the Power of Team" during December 21-23, 2018.

NEDA met with presses and medias to PR about NEDA's development assistance roles and send out best wishes on the occasion of New Year season throughout December 2018.



Mr. Perames Vudthitornetiraks, President, gave an opening remark for NEDA's training program on Public Debt Management and Economic Issues. The training program aimed to share knowledge and experience regarding world and regional economic issues, debt management, and capital market development. There were participants from 6 neighboring countries (Cambodia, Lao PDR, Myanmar, Vietnam, Sri Lanka, Bhutan) attending the training program during 21-26 January 2019.

NEDA conducted survey mission for water supply project on the Hongsa - Chiangman Road during 17-18 January 2019



Mr. Perames Vudthitornetiraks, President, and NEDA staff attended Love and Warmth at Winter's End (Oon Ai Rak Klay Kwam Nao) and had a chance to learn Thailand's culture and tradition that tie with rivers on 7 January 2019. The event was held at the Royal Plaza.

Guess it right, ? get the prize!!

...(x)...Please fill in the abbreviation of country 's names in front of pictures



Thailand (T)



Cambodia (C)



Lao People's Democratic Republic (L)



Republic of the Union of Myanmar (M)



Socialist Republic of Vietnam (V)



Kingdom of Bhutan (B)



Democratic Socialist Republic of Sri Lanka (S)



Democratic Republic of Timor-Leste (Ti)



Golden Bridge



Doi Inthanon



Taksang Monastery



Dili



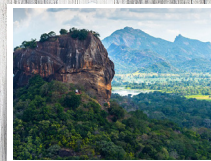
Wat Xieng Thong



Royal Place



Shwedagon Pagoda



Sigiriya



Full Name.....

Tel.....

Address

Open for answer until **15 April 2019**.

(Please remark the letter as "PR: Guess it right, get the prize")

First 3 person with the correct answer get the prizes shown.

Friendship Editorial Team, Volume 11/2562

Advisors

- Colonel Saranyu Viriyavejakul, D.Sc.
Vice President
- Mr. Nutthapol Prasobchoke
Director of Administration Bureau

Editorial Team

- Ms. Wipa Sisod
Senior Treasury Analyst
- Mr. Mongkol Charoensri
Policy and Planning Analyst, Professional Level
- Ms. Pannapa Poolmark
Policy and Planning Analyst
- Ms. Kate Tintani
Project Analyst
- Mr. Chotesiri Buranasiri
Project Analyst

Editor

- Ms. Watcharee Khampul
Public Relations Officer, Professional Level

Producer

Itsaralak Design Studio Co., Ltd

Contact

Suntowers A Building 14 FL, 123 Vibhavadi - Rangsit Road, Chompol, Chatuchak, Bangkok 10900, Thailand Tel. +662 617 7676 Fax. +662 617 7683 - 4



Neighbouring Countries Economic Development Cooperation Agency,
(Public Organization) (NEDA), Ministry of Finance
Suntowers A Building 14 Fl., 123 Vibhavadi - Rangsit Road, Chompol, Chatuchak, Bangkok 10900, Thailand
Tel. +662 617 7676 Fax. +662 617 7683 - 4
www.neda.or.th
www.facebook.com/NEDA2548